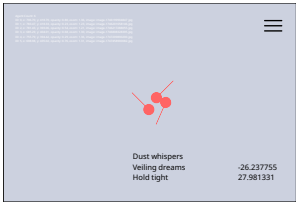


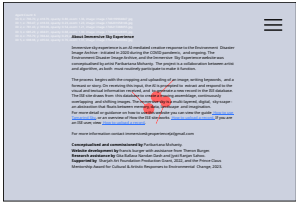
# HOW THE ISE SITE WORKS (OVERVIEW)



1

## LANDING PAGE

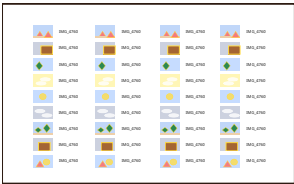
The ISE site draws from a database of sky images to create a moving assemblage, continuously overlapping and shifting. The immersive sky is a multi-layered, digital, sky-scape – an abstraction that floats between memory, data, landscape and imagination.



2

## ABOUT PAGE

"ISE engages with archived images, altering their historic value and impact in the hope that this will open new ways of engaging with climate discourse"



## ENVIRONMENTAL DISASTER IMAGE ARCHIVE

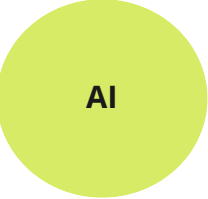
The ISE site and database was commissioned in connection with the *Environmental Disaster Image Archive*.



3

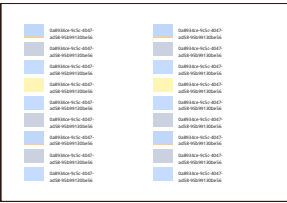
## SIGN IN & UPLOAD TO DATABASE

An ISE user uses the ISE site to submit an image, technical data, and a forecast or story.



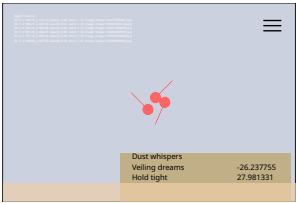
## AI INTERPRETATION AND POETIC FORECAST

The submission triggers a request to an AI service, prompting it to analyse the image and text input, and generate interpretative, technical, and poetic data.



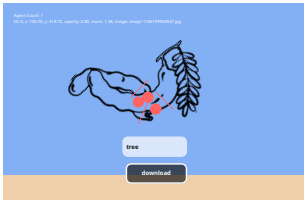
## ISE DATABASE

The AI service adds a record in the ISE database, combining its own responses with the ISE user's inputs.



## RETURN TO LANDING PAGE

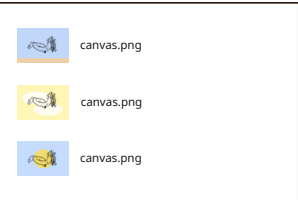
The ISE user will see the result of their submission within a few moments of submitting their image.



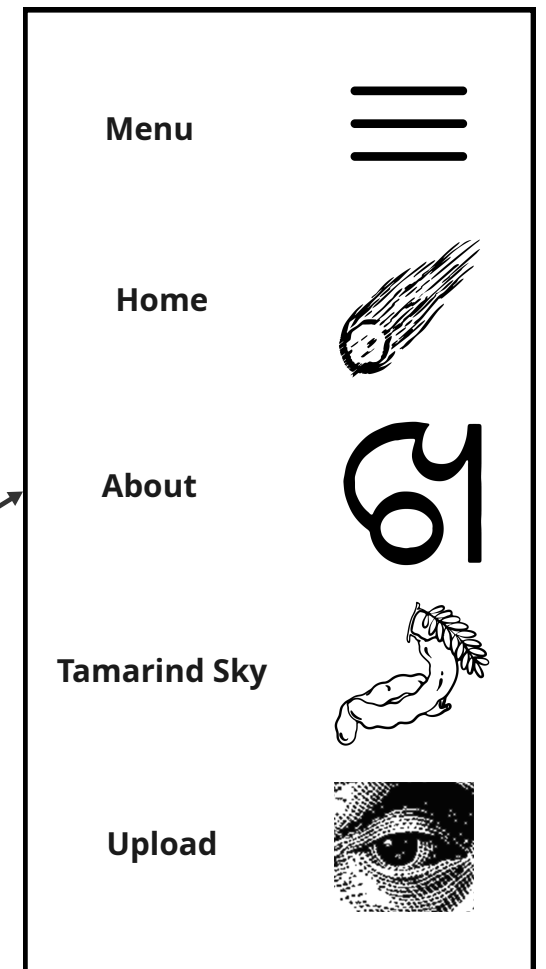
4

## TAMARIND SKY

The user or any visitor to the site may download the ISE sky layers as a 'tamarind sky'. The search function can be used to generate new combinations drawn from the ISE database.

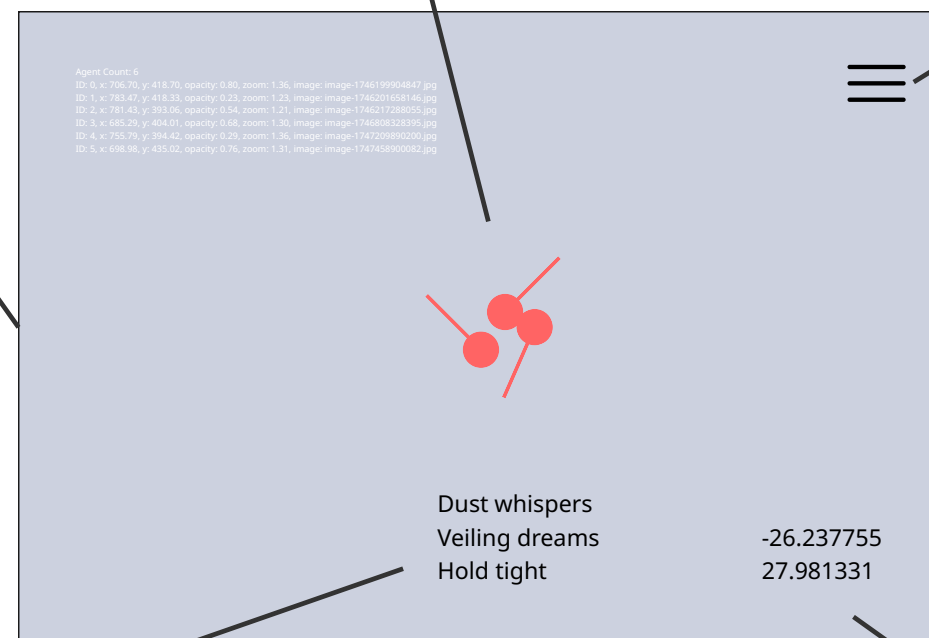


## Site menu



The ISE site draws on the most recent of records from the ISE database, varying their position and opacity to create an atmospheric effect.

The white text and red symbols on the homepage are an indication of the site's script engaging with the ISE database's records.



A short text shares a combination of the ISE user's input (forecast or story and keywords) and the AI's interpretation of the sky within the image.

The longitude and latitude of recent records are shown alongside the images.